

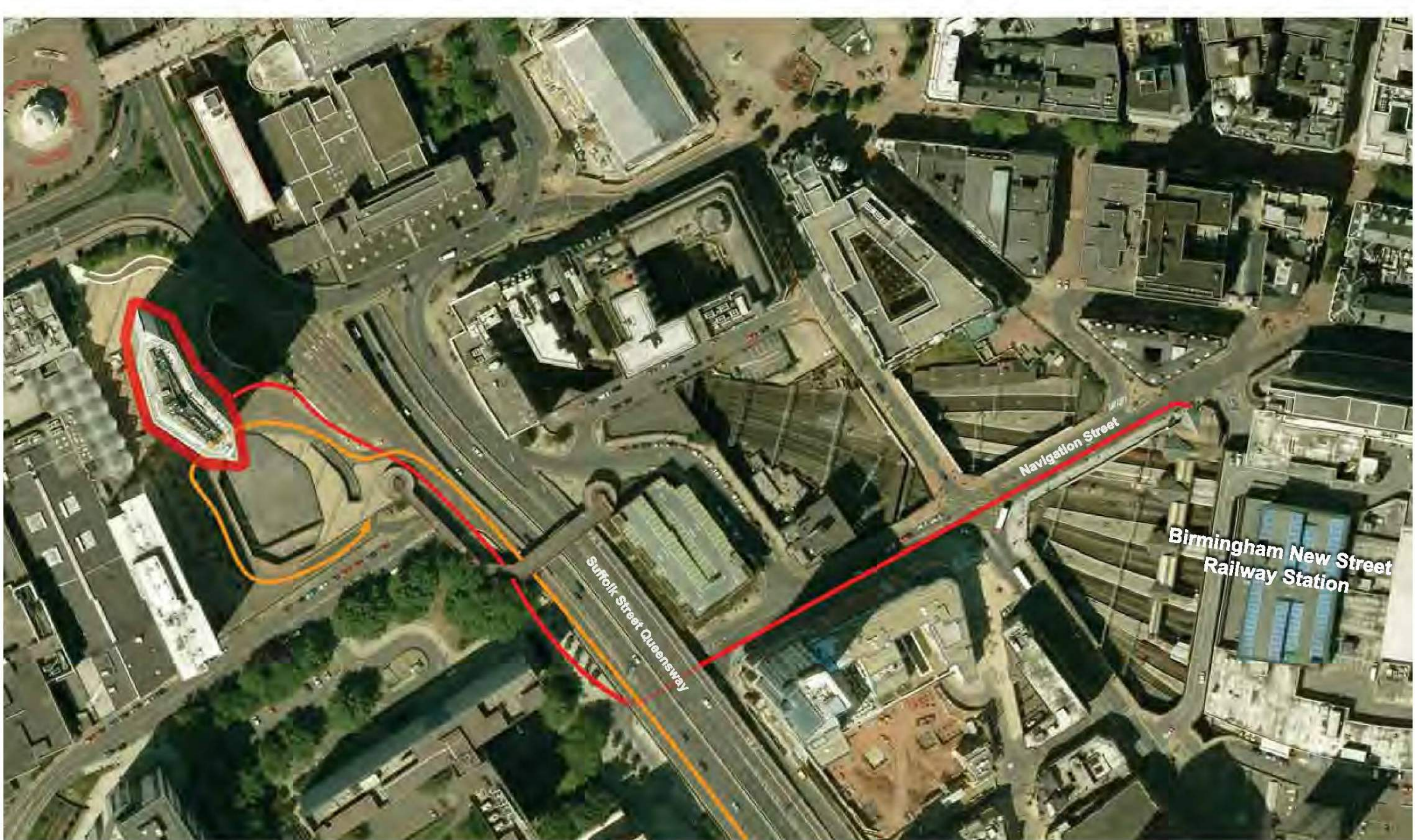
Birmingham Office Location

TSP

Alpha Tower
Suffolk Street
Birmingham
B1 1TT, UK

T: +44 (0) 121 242 1240

F: +44 (0) 121 246 4664



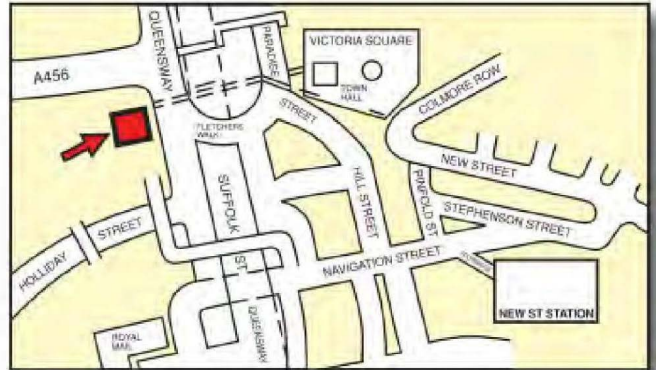
● By Foot from Birmingham New Street Railway Station (Take the Victoria Square Exit)

● By Vehicle to Office Carpark

TSP

8th Floor, Alpha Tower
Crowne Plaze
Suffolk Steet
Birmingham
B1 1TT

Tel: +44 (0) 121 242 1240
Fax: +44 (0) 121 246 4664



By Rail:

There is a regular train service to Birmingham New Street Station from all parts of the country, e.g. Trains run every hour from London, Euston with journey time being approximately 1hr 40mins. Once you arrive at New Street Station exit via the new footbridge (Navigation Street Entrance). Cross the road and turn left along Navigation Street, under the flyover. Immediately turn right, up the ramp parallel to Suffolk Street Queensway. Cross Holliday Street and AlphaTower is the large white office block on the left hand side.

If you should exit the station via the Pallisades, go down the ramp next to McDonalds and at the road junction turn left up the pedestrianised portion of New Street. At the top, Victoria Square, carry straight on with the old Town Hall building on the right hand side and cross Paradise Street via the pelican crossing. Proceed through the Fletcher's Walk shopping arcade and under the flyover, Alpha Tower is now straight ahead of you.

By Road:

From M6 (South & North)

Leave the M6 at Junction 6 and follow the A38(M). Follow the signs to the City Centre and South – A38(M). Do not take any exit to the left. Go over 1 flyover and through 2 Queensway tunnels. On leaving the second tunnel, keep in the left hand lane, indicate left and drive down the 'slip road' to the Holloway Circus island / roundabout. At the island, double back up the dual carriageway (Suffolk Street Queensway) keeping in the left hand lane and take the 4th exit left which is only a matter of yards after the 3rd exit (Holliday Street). From M5 South-West Leave the M5 at Junction 3 and travel along the A456 (Hagley Road) for 4_ miles to the Five Ways island/roundabout. Keep in the outside lane and go under the island/roundabout into Broad Street using the underpass. Turn right into Gas Street, take a 180 left into Holliday Street. Where Holliday Street meets the dual carriageway (Suffolk St. Queensway), turn left and travel up the Queensway for just 20 yards before turning left into Crowne Plaza forecourt. From M40 Oxford and South Arrive on the M42 and travel west towards the M5. Travel north on the M5 leaving at Junction 3 (Read directions "From M5 (South West)" From M42 East Midlands Join the M6 heading towards Birmingham Central and leave the M6 at Junction 6. Read directions "From M6 (South & North)"